

# PINNACLE SL600

## The World's Most Compact Stair Lift

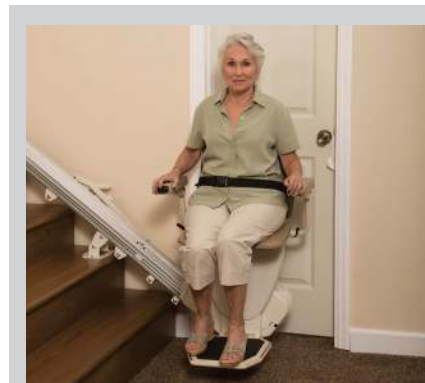


### A STEP ABOVE

The Pinnacle SL600 has earned its name and reputation for standing above the rest. Design, Form and Function come together to make Pinnacle the most reliable, durable, and sought after stair lift on the market.

What makes Pinnacle different? It's what you don't see, the patented Helical Worm Gear and reinforced Nylon Polymer Gear Rack. This innovative drive system eliminates maintenance, provides you savings with lower energy bills, and delivers a smooth, stable ride you can rely on.

The SL600 and SL600FR offer a 350 lb weight capacity and the confidence to conquer the stairs in your home.



### CLEAR WALKWAYS

Harmar's exclusive automatic and mechanical folding rail eliminates a trip hazard at the lower landing area. Its operation is automatic, the user does not need to stop or have someone else assist. And since it's mechanical, there are no additional switches or controls.

# PREMIUM PERFORMANCE **YOU** DESERVE

## Pinnacle SL600 Stair Lift



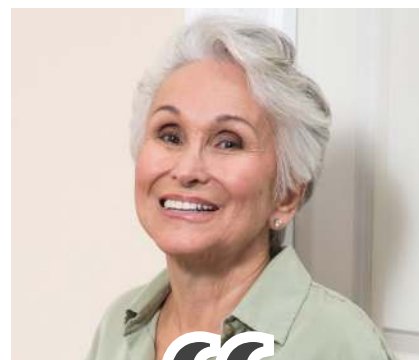
An LED in the armrest lets the user know when the lift is ready to operate.



Patented Nylon Polymer Gear with Helical Worm Drive features six points of contact for maximum stability.



Oversized non-skid footrest provides more comfort and security.



*I ordered my Pinnacle SL600 with folding rail and I'm so happy with my decision. It automatically folds up and out of the way. My family and guests are amazed by how little space my lift takes up.*

# 40+

Cycles Per Charge

# LOW

Maintenance

# 350

Pound Capacity

# 10.5"

Folded Width from Wall

### SL600 Product Specifications

Weight Capacity	350 lb (160kg)
Lift Speed	20 feet/minute
Folded Width	10.5"
Drive System	Helical Worm Gear with Nylon Polymer Rack
Power	24V DC (Battery), Charger Plugs into Standard AC Outlet
Rail Length	15'6" standard
Safety Features	Centrifugal Overspeed Break, Swivel Seat Cut-off Switch, Bi-directional Footrest Obstruction Sensor, Chassis Obstruction Sensors, Retractable Seat Belt
Warranty	Limited Lifetime Warranty (1-year Battery)
Options	Key Lock, Extra Rail

### SL600FR Product Specifications

Folding Rail	Automatic, Mechanical & Continuous Motion
--------------	---

### COMPACT

The Pinnacle SL600 seat folds up neatly, occupying a mere 10.5" of width from your staircase wall and allowing others to pass by. The rail mounts only 0.5" from the wall and is only 3" tall, helping to minimize its footprint.



Harmar.com | 800.833.0478

